



# NORTHWEST OPEN TECHNICAL UNIVERSITY



1

New generation  
higher professional  
education



195027, St. Petersburg, 9a Yakornaya St., Lit. A.  
Admissions Office: +7-962-7037055, +7-812- 3092265,  
[info@nwotu.com](mailto:info@nwotu.com); Rector's Office: +7-812- 3092387



# BASIC INFORMATION ABOUT THE UNIVERSITY

2



- Established on the technological and methodological basis of the Northwestern Correspondence Polytechnic Institute (University), founded in 1930 in the interests of Soviet industrial development
- Is a pioneer and recognized leader in distance engineering education
- NWOTU/ZPI has trained over 100 thousand engineering professionals in various production sectors of national economy of the USSR and the Russian Federation



# THE UNIVERSITY IS LICENSED IN 12 FIELDS OF STUDY



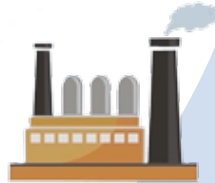
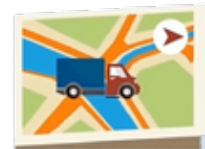
- Economics
- Management
- Power Engineering and Electrical Engineering
- Metallurgy
- Mechanical Engineering



- Systems Analysis and Management (Bachelor's Degree)
- Technology of Transport Processes
- Management in Technical Systems
- Information systems and technologies



- Exploitation of transport technological machines and complexes
- Technosphere Safety
- Systems analysis and management (Master's degree)





# THE UNIQUENESS OF THE OFFER:

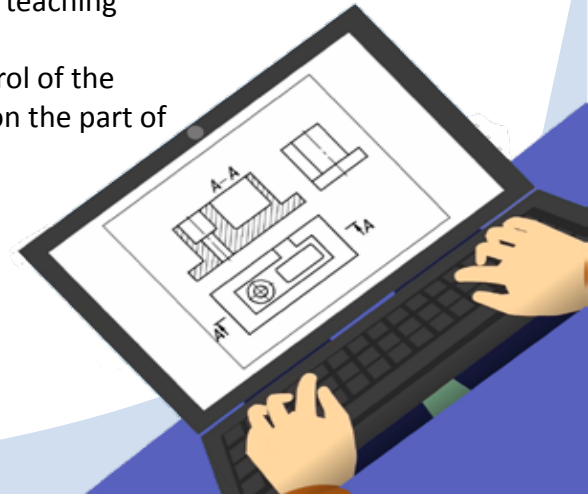
As a consequence of the application of:

- ✓ "live" distance learning technologies
- ✓ proven teaching methods
- ✓ a team of people who have successfully put them into practice
- ✓ a flexible learning schedule

We create an offer that is unique in terms of accessibility and quality:

- ✓ the opportunity to attract the best teaching staff from across the Russian Federation and foreign countries to the training process on a competitive basis

- ✓ training available to any resident of the country
- ✓ Training opportunities for people with disabilities and limited mobility
- ✓ low costs for the organization of the process, which allows the company to concentrate on the quality of the study materials and the teaching process
- ✓ full accessibility of control of the process and its results on the part of the customer





## Stuff:

**35%**

PhDs

**55%**

Cand. Sc.

- The teachers have experience in practical cooperation with industrial enterprises and organizations of the real sector of economy, are sector-specific practitioners.
- The scope of academic interests of the teaching staff extends to all areas of training





## STUDENTS CAN ACCESS THE LEARNING ENVIRONMENT FROM ANY COMPUTER OR MOBILE DEVICE WITH INTERNET ACCESS

6





- Log in to the learning environment
- Viewing a timetable
- Study educational material
- Access the digital library
- Taking a test
- Participation in lectures, seminars, online consultations
- Execution of virtual laboratory works
- Checking up on results

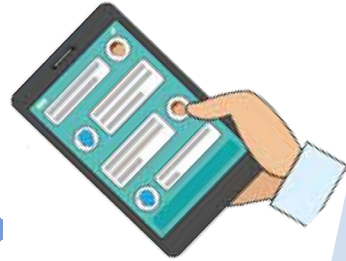




# ONLINE LEARNING ENABLES STUDENTS TO GAIN IN-DEMAND KNOWLEDGE AND SKILLS WITHOUT DISRUPTING THEIR WORK



- online chat 
- video chat
- live presentation 





## In-house integrated software and hardware complex located on the NWTU campus



- A single portal for students, teachers, corporate customers
- A mobile application for students and teachers



- Electronic information and educational environment
- A platform for distance learning classes and events

- A system for the organization of educational and administrative processes at the university
- digital library
- Training materials
- Video lectures

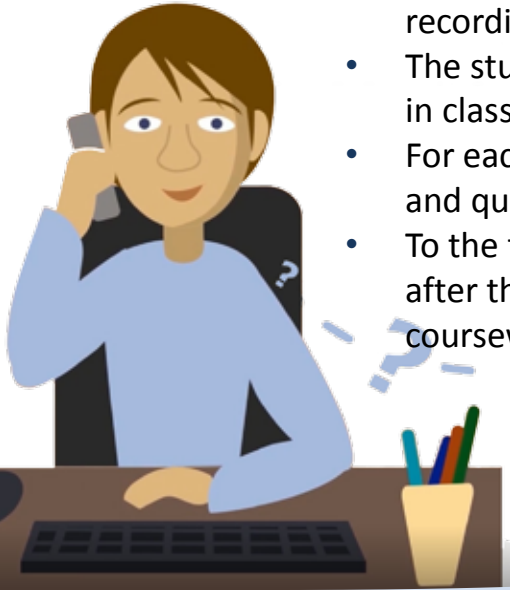
- Webinar recordings
- Virtual labs
- Books and materials
- Student portfolios







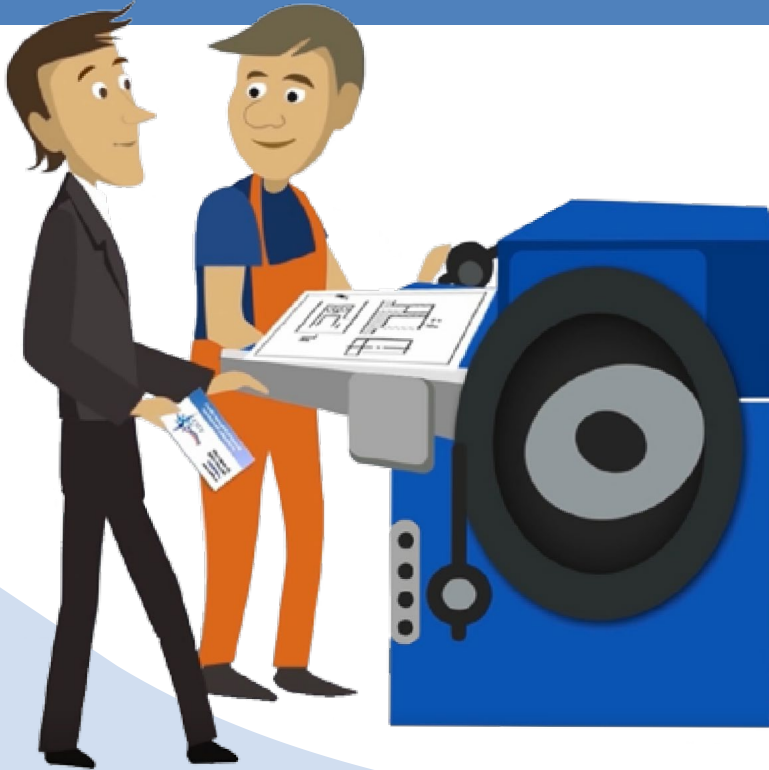
- The teacher communicates with students in real time
- The student is able to view all class recordings
- The student can ask questions in real-time in class and during video consultations
- For each module, the student takes practice and quizzes
- To the final testing the student is allowed after the completion of laboratory, control, coursework





# WE OFFER INDUSTRIAL COMPANIES AND HOLDINGS:

10



- 1 On-the-job training in engineering and technology for employees of industrial enterprises:
  - a. Full control over the results of employee training
  - b. Possibility to involve enterprise specialists in training and methodological activities
  - c. Customized training programmes and packages



# WE OFFER INDUSTRIAL COMPANIES AND HOLDINGS:

- 2 organising retraining courses for employees in the most relevant areas of modern production, e.g:
  - a. Technical, industrial and occupational safety, labour protection, environmental safety more than 40 different programs
  - b. Information security of enterprises. Technical, organizational and legal aspects of information security of companies 16 programmes





# WE OFFER INDUSTRIAL COMPANIES AND HOLDINGS:



3 Offer our organisational, methodological and technological expertise in establishing corporate training centres:

- a. Optimal combination of experience, existing infrastructure will enable our potential partner to build its own system of personnel training and testing
- b. Ability to build an effective hybrid online/off-line training environment and processes will significantly improve the efficiency of our partner's training processes
- c. Maximum consideration of all possible aspects of the specific nature and needs of our potential partner will enable it to significantly improve the quality of its own processes, with a consequent increase in the efficiency of its own functioning



- ❑ Enterprises have the opportunity to adjust the curriculum to meet their production needs
- ❑ The time needed to implement new technologies in the production process is reduced
- ❑ The period of adaptation of young specialists to the chosen specialty is shorter as compared to graduates of "full-time" universities
- ❑ Reduces staff turnover by giving working people the opportunity to learn and develop their careers in the workplace with minimal time and expense
- ❑ The attractiveness of the company to the local community is increased



**We offer our potential customers and partners a full range of educational services and technologies that are in demand in modern industrial enterprises**